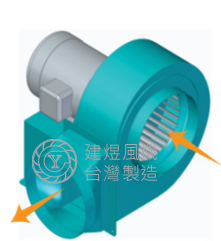
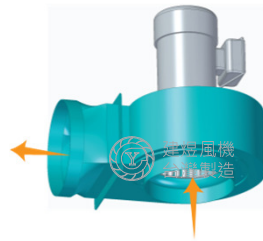


CY279P / CY279PV / CYS279 風機規格書

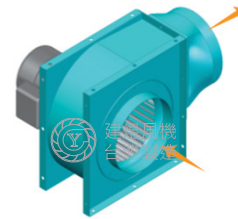
* 台灣製造
* 絕緣等級: E / F 級



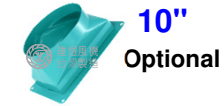
CY279P
(臥式/有馬達座)



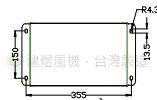
CY279V
(立式/無馬達座)



CYS279
(四角框固定)

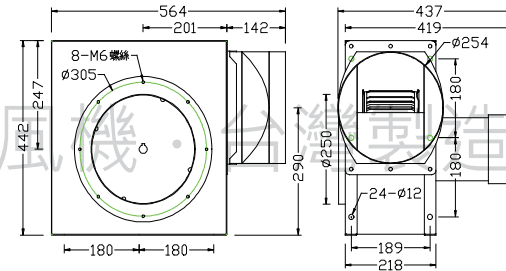


10"
Optional

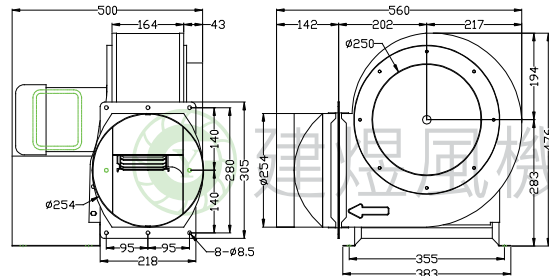


(CY279P)

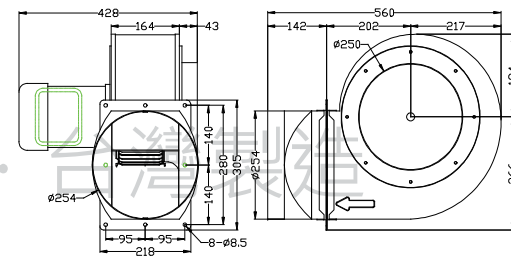
單位: mm(公釐)



(CYS279)



(CY279P)



(CY279PV)

型號	電壓	頻率	相數	極數	電流	馬力	轉速	最大風量			最大靜壓			重量
Model	Rated Voltage	Frequency	Phase	Pole	Current	Power	Speed	Max. Air Flow			Max. Pressure			Weight
	V	Hz	Ø	P	A	Watt/HP	R.P.M.	CMM	CMH	CFM	mmAq	inchAq	Pa	KG
CY279P	110/220	50	1	4	8.6 / 4.3	1/2 HP	1420	36	2160	1271	34	1.34	333	
CY279PV CYS279		60					1600	40.5	2430	1430	49	1.93	481	



建煜工業股份有限公司
CAM YORK INDUSTRIAL CO., LTD.
413 台灣台中市霧峰區錦州路308巷9號

TEL:04-23322627
FAX:04-23322629
E-mail: blower-cy@umail.hinet.net
http://www.blower.com.tw/